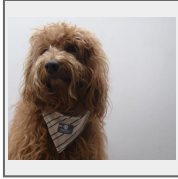


♂ Southern Partners Alf



Breed : M Australian Labradoodle
 RegNo : WALA00021586
 DOB : 19 Nov 2013
 Microchip No : 977200008497397
 Registration : Full - registered and breedable
 Breeding Status : Active
 Owner : Frank on the Road Labradoodles (WALA-1019-00950)

HD OFA : Good
 ED : Negative
 Clinical eyetest : unaffected
 DNA Profile : - Exempt
 PRA-prcd : Normal/Clear
 EIC Tested : Normal/Clear



parents	grandparents	g-grandparents	g-g-grandparents	g-g-g-grandparents
Southern Partners Pereyra ♂ M Australian Labradoodle NW00021587 27 Jun 2012 Red Coat: Fleece Coat Pattern: Solid	Highland Denver ♂ Australian Labradoodle NW00021588	Whispering Winds Highlands Blaze ♂ M Australian Labradoodle, NW00006613	aAprina in Boo Boo E-3 Taz ♂ Australian Labradoodle, NW00000019	Rutland Funnie Fella ♂ Australian Labradoodle, NW00004844
			Whispering Winds Lady Pink ♀ Australian Labradoodle, NW00006614	Rutland Boo Boo ♀ Foundation ALD, NW00004806
		Primetime Good Golly Miss Molly ♀ M Australian Labradoodle, NW00004371	Aladdin Joey ♂ M Australian Labradoodle, NW00000126	Walkabout Maximum Overdrive ♂ Foundation ALD, NW00006536 Primetime Roussett Ruffles ♀ Australian Labradoodle, NW00004386
			Avonlee Cocoa Bean ♀ Australian Labradoodle, NW00000386	Darby Park "Rufus" Brown ♂ M Australian Labradoodle, NW00001798 Aladdin Sweet Georgia Brown ♀ Australian Labradoodle, NW00000130
			Tegan Park El Grande ♂ Foundation ALD, NW00005935	Rutland Lil Brett ♂ Foundation ALD, NW00004870 Avonlee Samira ♀ Foundation ALD, NW00000401
	Manor Lake Coco Chanel (Soul) ♀ M Australian Labradoodle NW00021589	Tegan Park Royal Flush ♂ M Australian Labradoodle, NW00006109	Tegan Park El Grande ♂ Foundation ALD, NW00005935	Tegan Park Moby ♂ LO-Multi-gen Labradoodle, NW00006054 Tegan Park Mother Goose ♀ Australian Labradoodle, NW00006060
			Tegan Park Scottish Fantasy ♀ Australian Labradoodle, NW00006121	Tegan Park Poppa Bear ♂ Australian Labradoodle, NW00006083 Tegan Park Irish Desire (Dessy) ♀ Foundation ALD, NW00005980
		Aladdin Elizabeth Marie ♀ M Australian Labradoodle, NW00000124	Cloudcatcher Limited Edition ♂ M Australian Labradoodle, NW00001423	Tegan Park Pooh Bear (Zappa) ♂ Australian Labradoodle, NW00006082 Cloudcatcher Sassy ♀ M Australian Labradoodle, NW00001425
			Aladdin Sweet Georgia Brown ♀ Australian Labradoodle, NW00000130	Rutland Lil Brett ♂ Foundation ALD, NW00004870 Primetime Alexis ♀ Foundation ALD, NW00004358
			Tegan Park The Porter ♂ M Australian Labradoodle, NW00006179	Tegan Park The Bellman ♂ M Australian Labradoodle, NW00006174 Tegan Park Illusive Shine ♀ M Australian Labradoodle, NW00005974
Manor Lake Joy ♀ M Australian Labradoodle NW00021590	Hudson The Super ♂ M Australian Labradoodle NW00002664	Tegan Park Aladdin ♂ Foundation ALD, NW00005847	Tegan Park Pinocchio ♂ Australian Labradoodle, NW00006079 Tegan Park Violet Crumble ♀ Labradoodle, NW00006195	
		Tegan Park Red Embers ♀ Australian Labradoodle, NW00006094	Tegan Park Red N Radicle ♂ Foundation ALD, NW00006097 Tegan Park Flickering Fire ♀ Australian Labradoodle, NW00005948	
	Manor Lake Triumphant ♂ M Australian Labradoodle, NW00003570	Heartsong King of Hearts ♂ M Australian Labradoodle, NW00002542	Heartsong A Love Supreme ♂ Australian Labradoodle, NW00002540 Sunsethills Spun Silk ♀ M Australian Labradoodle, NW00005649	
		aAprina Jarrah ♀ Australian Labradoodle, NW00000041	Rutland Funnie Fella ♂ Australian Labradoodle, NW00004844 Rutland Redd Elu ♀ Foundation ALD, NW00004911	
		Prairie Golden Girl ♀ M Australian Labradoodle, WALA00004275	US Washington ♂ Australian Labradoodle, NW00006404 DownUnder Lucy ♀ Australian Labradoodle, NW00001976	Rutland Uluru ♂ Foundation ALD, NW00004940 Rutland Redd Russet ♀ Foundation ALD, NW00004913 Tegan Park Firestone ♂ Australian Labradoodle, NW00005946 Rutland Hannah ♀ Foundation ALD, NW00004849

WALA Board of Directors

WALA Board of Directors

30 Mar 2022